

LEGEND

F0	A	Splice Closure
F1	A	Splice With Splitter
F2		
F3 A Leg & G Leg		
F3 B Leg & H Leg		
F3 C Leg & I Leg		
F3 D Leg & J Leg		
F3 E Leg		
F3 F Leg		
F4 - Drops		
New - Aerial		
New - Direct Bore/Open Trench		
New - Microtrench		
New - Nanotrench/Direct Bury		
AsBuilt - Aerial		
AsBuilt - Nanotrench/Direct Bury		
AsBuilt - Direct Bore/Open Trench		
AsBuilt - Microtrench		
Spare Conduit		
Property Line/ROW		
Back of Curb/Edge of Gutter		
Edge of Pavement		

GENERAL NOTES:

- GENERALLY, INDIVIDUAL VAULTS, CONDUITS, AND CLOSURES SHOULD NOT CONTAIN MULTIPLE HIERARCHIES OF FIBER CABLES UNLESS TRANSITIONING BETWEEN HIERARCHIES
- F1 AND F2 HIERARCHIES CAN BE COMBINED IN A SINGLE VAULT, BUT F1 AND F3 CANNOT
- ALL F0-F2 MICROTRENCHED CONDUIT PATHS CONSIST OF 1" CONDUITS UNLESS OTHERWISE INDICATED AND ANNOTATED. QUANTITY AS INDICATED ON THE PLAN PAGES.
- ALL DIRECT BURY F3 FIBERS WILL BE 24 CT FOC UNLESS OTHERWISE STATED ON PLAN.
- ALL BORED/TRENCHED CONDUIT PATHS CONSIST OF (4) 1.25" CONDUIT UNLESS OTHERWISE INDICATED AND ANNOTATED
- ALL VAULT, FIBER & CONDUIT LOCATIONS ARE FOR ILLUSTRATIVE PURPOSES ONLY. FOR EXACT PLACEMENT AND POSITIONING, REFER TO THE APPROVED UG PERMIT PLANS (VAULT POSITIONS MAY BE SHIFTED SLIGHTLY AS NEEDED TO AVOID EXISTING INFRASTRUCTURE).

EXAMPLES:

- A MASTER SPLITTER VAULT SHOULD NOT CONTAIN A DROP CLOSURE

F1 - PRIMARY DF SYSTEM / F2 - SECONDARY DF SYSTEM:

- F1 VAULT SIZE: LV, XLV
- F2 VAULT SIZE: SV, LV, XLV
- VAULTS SPACED MAXIMUM OF 800' APART, WITH 90° MAX CONDUIT BENDS BETWEEN
- F1 AND F2 VAULTS MAY BE COMBINED AS NEEDED TO FACILITATE AN EFFICIENT DESIGN

F3 - ACCESS FIBER SYSTEM:

- VAULT SIZE: SV OR DV
- VAULTS SPACED AS NEEDED, AS SHOWN ON PLANS
- RESERVED FOR DROP, NAPS ONLY (COYOTE OR FOSC450a, OR FOSC450b)
- CONNECTS TO F2 - SECONDARY DF SYSTEM AT SPLITTERS ONLY.
- F3 CURBLESS STREET DEPLOYMENT - NO DROP CLOSURES SHOULD BE DIRECT BURIED WITHIN 36" OF A ROADWAY WITH NO CURB. IF DROP CLOSURE IS REQUIRED TO BE PLACED <36" OF THE ROADWAY A DROP VAULT IS REQUIRED TO HOUSE THE ENCLOSURE

DROP VAULTS (DV):

- CAN HOUSE ONLY (1) PLP COYOTE DROP CLOSURE.

ALL VAULT (SV):

- CAN HOUSE (1) FOSC450 A, B, OR C CLOSURE, OR UP TO (2) PLP COYOTE DROP CLOSURES

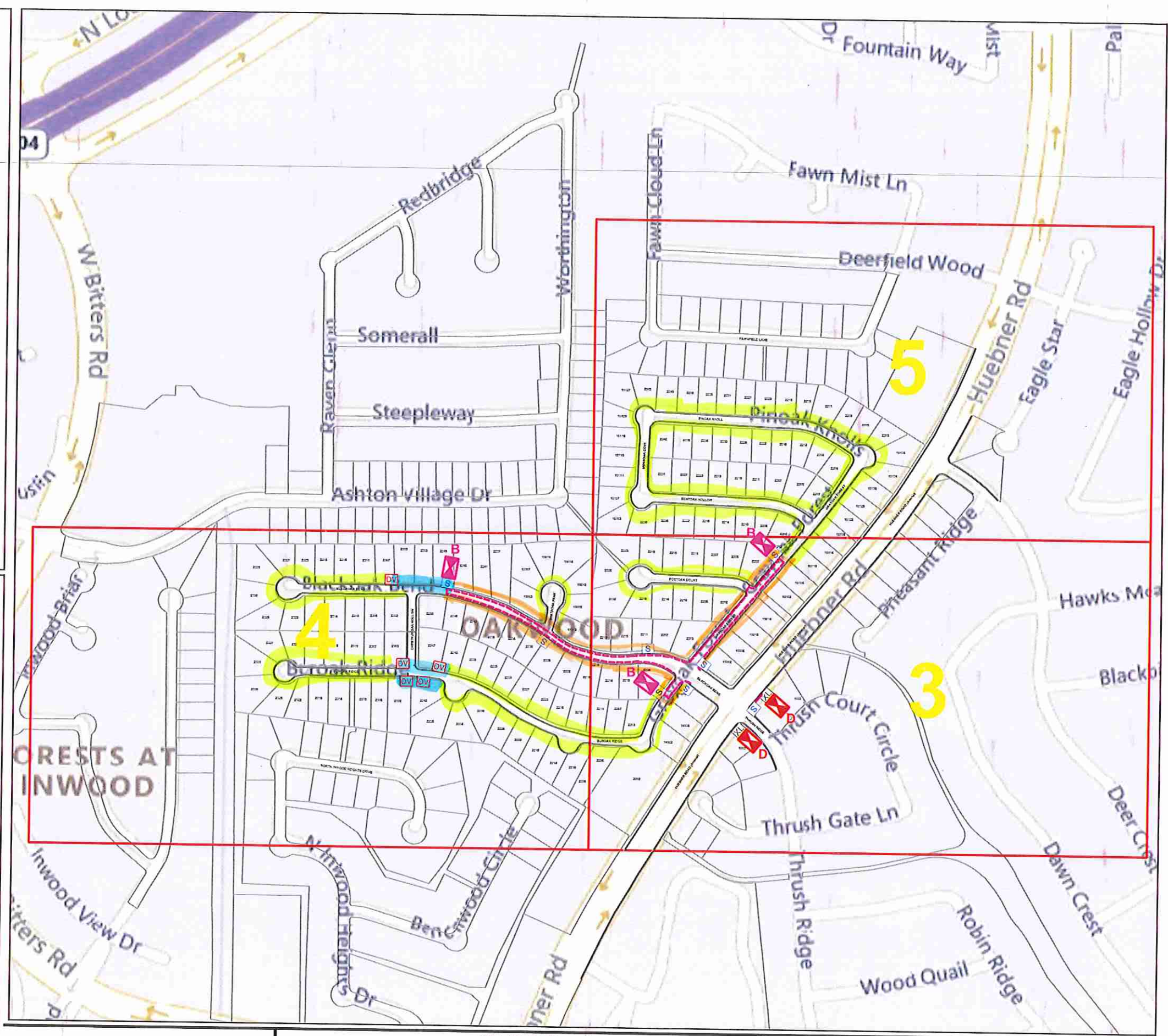
VAULT (LV):

- HOUSE UP TO (2) FOSC450 B OR C CLOSURES.
- CLOSURES SHOULD NOT BE STORED IN LVs UNDER ANY CIRCUMSTANCES

ARGE VAULT (XLV):

- USE NO MORE THAN (4) CLOSURES OF ANY TYPE BUT NO MORE THAN (2) FOSC450D CLOSURES
- CONDUITS SHALL CONNECT TO ALL F1/F2 VAULTS ON THE CONDUIT PATH
- CLOSURES CAN ONLY BE PLACED IN XLV

6" Cover
8" Cover
Bore



REVISIONS

VERSION	DESCRIPTION	DATE
1	OakWood ROE_Red Lined As-Build Fiber & Conduit Plan Prepared By: Global Optics / Frank Bustamante (210-792-8245) Prepared: 9/7/2022	

PROJECT NUMBER:

**Oakwood
ROE**

SHEET TITLE:

INDEX

SCALE:
1:128

PAGE:
2

OF:
8



Google Fiber

enco consulting
1100 Lakeway Drive,
Suite 100
Lakeway, Texas 78734
Voice: 512-261-3001
Fax: 512-261-7001